

# UFR Quick Setup Guide for Windows 9x

## **Canon Color Color Network UFR Printer Kit-C1**

The Canon logo is displayed in a bold, black, sans-serif font. The letter 'C' is significantly larger and more stylized than the other letters, which are in a standard weight.

Mar 18 2004



## Application

This manual has been issued by Canon Inc. for qualified persons to learn technical theory, installation, maintenance, and repair of products. This manual covers all localities where the products are sold. For this reason, there may be information in this manual that does not apply to your locality.

## Corrections

This manual may contain technical inaccuracies or typographical errors due to improvements or changes in products. When changes occur in applicable products or in the contents of this manual, Canon will release technical information as the need arises. In the event of major changes in the contents of this manual over a long or short period, Canon will issue a new edition of this manual.

The following paragraph does not apply to any countries where such provisions are inconsistent with local law.

## Trademarks

The product names and company names used in this manual are the registered trademarks of the individual companies.

## Copyright

This manual is copyrighted with all rights reserved. Under the copyright laws, this manual may not be copied, reproduced or translated into another language, in whole or in part, without the written consent of Canon Inc.

***COPYRIGHT © 2001 CANON INC.***

*Printed in Japan*

## Caution










Use of this manual should be strictly supervised to avoid disclosure of confidential information.

---

## Symbols Used



---

This documentation uses the following symbols to indicate special information:

Symbol	Description
	Indicates an item of a non-specific nature, possibly classified as Note, Caution, or Warning.
	Indicates an item requiring care to avoid electric shocks.
	Indicates an item requiring care to avoid combustion (fire).
	Indicates an item prohibiting disassembly to avoid electric shocks or problems.
	Indicates an item requiring disconnection of the power plug from the electric outlet.
 Memo	Indicates an item intended to provide notes assisting the understanding of the topic in question.
 REF.	Indicates an item of reference assisting the understanding of the topic in question.
	Provides a description of a service mode.
	Provides a description of the nature of an error indication.

The following rules apply throughout this Service Manual:

1. Each chapter contains sections explaining the purpose of specific functions and the relationship between electrical and mechanical systems with reference to the timing of operation.

In the diagrams,  represents the path of mechanical drive; where a signal name accompanies the symbol, the arrow  indicates the direction of the electric signal.

The expression "turn on the power" means flipping on the power switch, closing the front door, and closing the delivery unit door, which results in supplying the machine with power.

2. In the digital circuits, '1' is used to indicate that the voltage level of a given signal is "High", while '0' is used to indicate "Low". (The voltage value, however, differs from circuit to circuit.) In addition, the asterisk (\*) as in "DRMD\*" indicates that the DRMD signal goes on when '0'.

In practically all cases, the internal mechanisms of a microprocessor cannot be checked in the field. Therefore, the operations of the microprocessors used in the machines are not discussed: they are explained in terms of from sensors to the input of the DC controller PCB and from the output of the DC controller PCB to the loads.

The descriptions in this Service Manual are subject to change without notice for product improvement or other purposes, and major changes will be communicated in the form of Service Information bulletins.

All service persons are expected to have a good understanding of the contents of this Service Manual and all relevant Service Information bulletins and be able to identify and isolate faults in the machine."



---

---

# Contents

## 第 1 章 UFR Setup Guide for Win9x

1.1 Overview .....	2
1.2 Items to Prepare and Points to Note .....	3
1.3 Connecting the Network Cable .....	4
1.4 Collecting Information Before Making Settings (on the side of the iR C6800) .....	5
1.5 Collecting Information Before Making the Settings (on the Windows PC side) .....	7
1.6 Making Settings Without Using Automatic Execution (CD-ROM) .....	10
1.7 Canon LPR2 .....	14
1.8 Installing Canon LPR2 .....	16
1.9 Installing Printer Drivers (LPR connection) .....	21
1.10 Useful Operations .....	31





---

# Chapter 1 UFR Setup

## Guide for Win9x

---

The instructions herein show how to make network connections for printer drivers using Canon LPR2.

- UFR is a PDL designed to print on an iR C6800 or iR C6800N from a PC.

Note:

In the case of the iR C6800, this function will be available when a Canon Color Network UFR Printer Kit-C1 (option) is installed.

(The function comes as standard with the iR C6800N.)

- Canon LPR2 uses the TCP/IP protocol for communication between the PC and the printer, allowing network printing as done on a local network.

## 1.2 Items to Prepare and Points to Note

0006-2912

---

**You will need the following for the installation of printer drivers:**

Canon Color Network UFR Printer Kit-C1

(optional for iR C6800; standard for iR C6800N)

- User Software CD-ROM (included with Canon Color Network UFR Printer Kit-C1)

**For detailed information, see the following documentation:**

- iR C6800/C6800N [Reference Guide]

- iR C6800/C6800N [Network Quick Start Guide]

- iR C6800N [Printer Guide] (Included in [User Manual CD-ROM].)

(optional for iR C6800; standard for iR C6800N)

The instructions herein are based on Windows 98; more or less the same instructions may be used for Windows Me.

## 1.3 Connecting the Network Cable

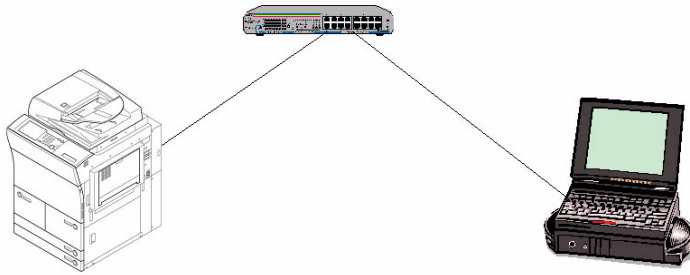
0006-2914

Connect the network cable.

<10Base-T/100Base-T>

- Have a LAN cable on hand (straight, 10Base-T/100Base-T).
- Connect the cable connector to the open HUB port.
- Connect the other cable connector to the iR C6800.

Sample Connection



F-1-1

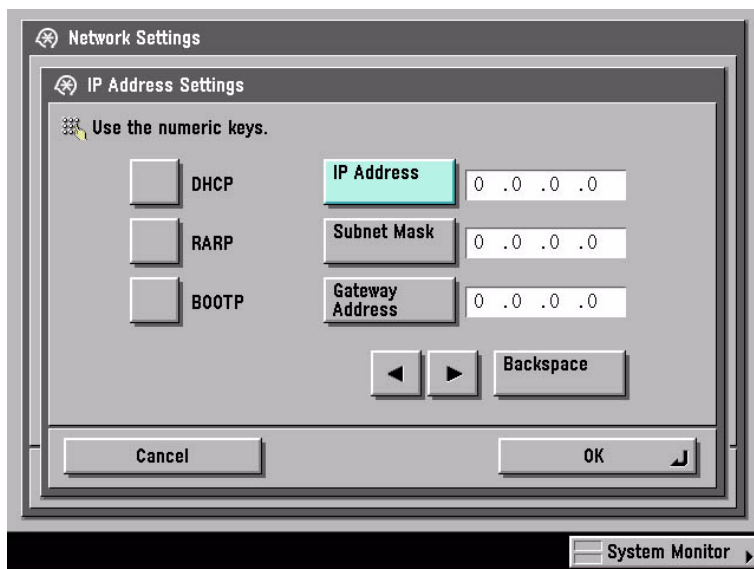
## 1.4 Collecting Information Before Making Settings (on the side of the iR C6800)

0006-2915

1) Find out the IP address given to the printer:

1. turn on the power.
2. click [Ad Func].
3. click [System Settings].
4. click [Network Settings].
5. click [TCP/IP Settings].
6. click [IP Address Settings].

(When you have obtained the IP address, click [Cancel] to end the operation.)



F-1-2

2) Take note of the IP address. You will be using it later when making network settings on the PC.

- Checking the Settings of the iR C6800

Ad Func>Report Settings>Network>User's Data List>Yes

see that a user data list (network) has been printed.

Note:

The IP address may also be checked on the printed user data list

- If no IP address has been set, set it, and click [OK] on the control panel.

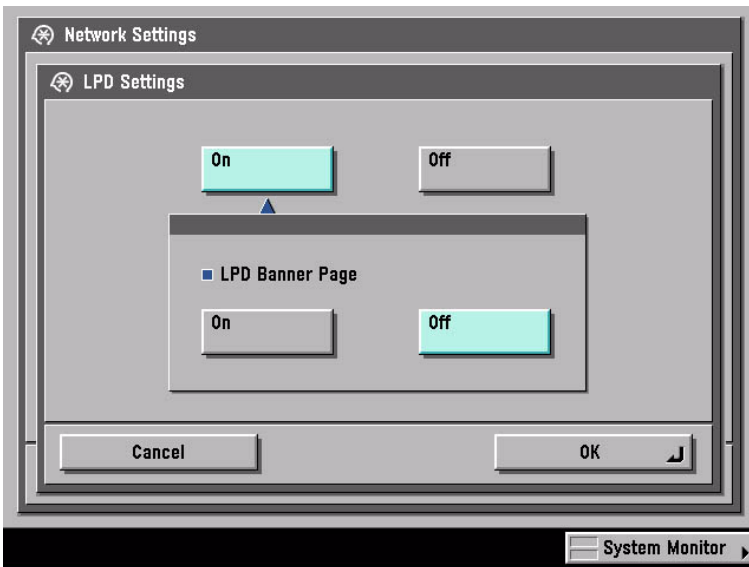
- There after, turn off the power, turn off the main power, and turn on the main power.

3) Check the LPD settings of the printer:

1. turn on the power.
2. click [Ad Func].
3. click [System Settings].
4. click [Network Settings].
5. click [TCP/IP Settings].
6. click Downward arrow button .
7. click [LPD Settings].
8. check to see that the notation is [On].

- if the notation is [On], click [Cancel] to end the operation.

- if the notation is [Off], on the other hand, click [On] and then [OK], while leaving [LPD Banner page] as it is.



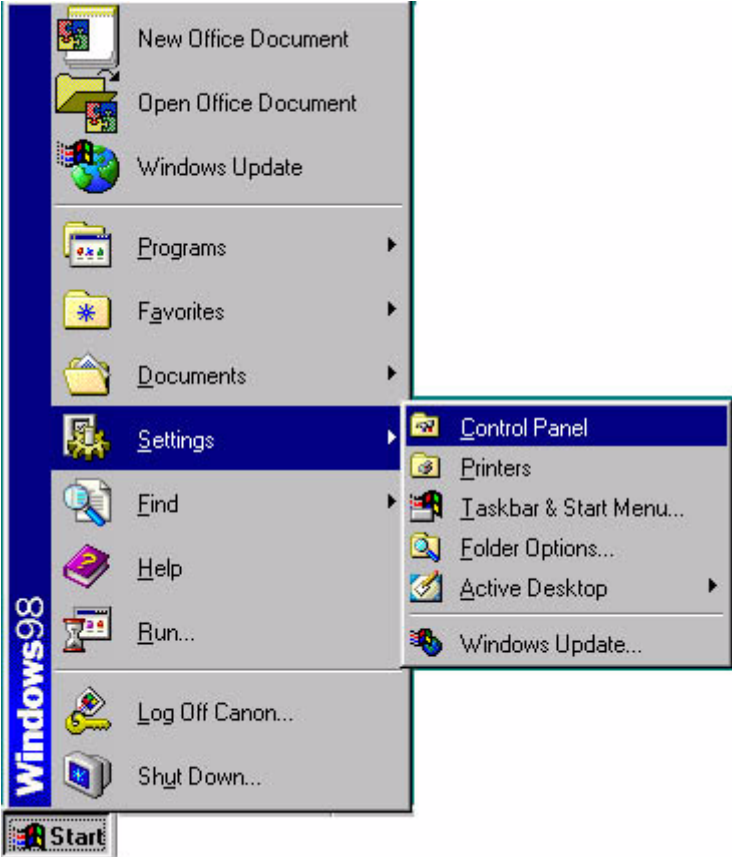
F-1-3

- After making these settings, turn off the power, turn off the main power, and turn on the main power.

# 1.5 Collecting Information Before Making the Settings (on the Windows PC side)

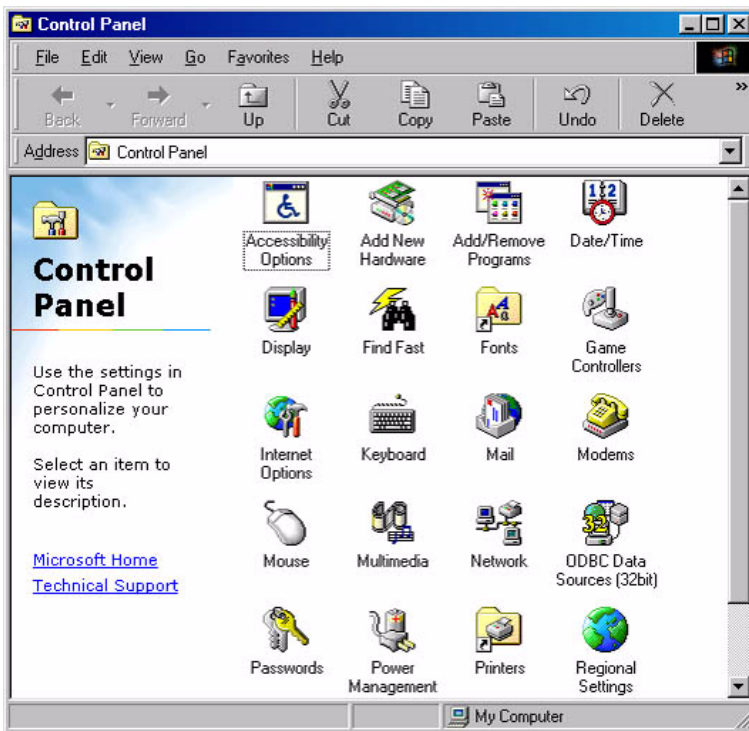
Check the name of the network interface card and TCP/IP.

1) Make the following selections: Start>Settings>Control Panel.



F-1-4

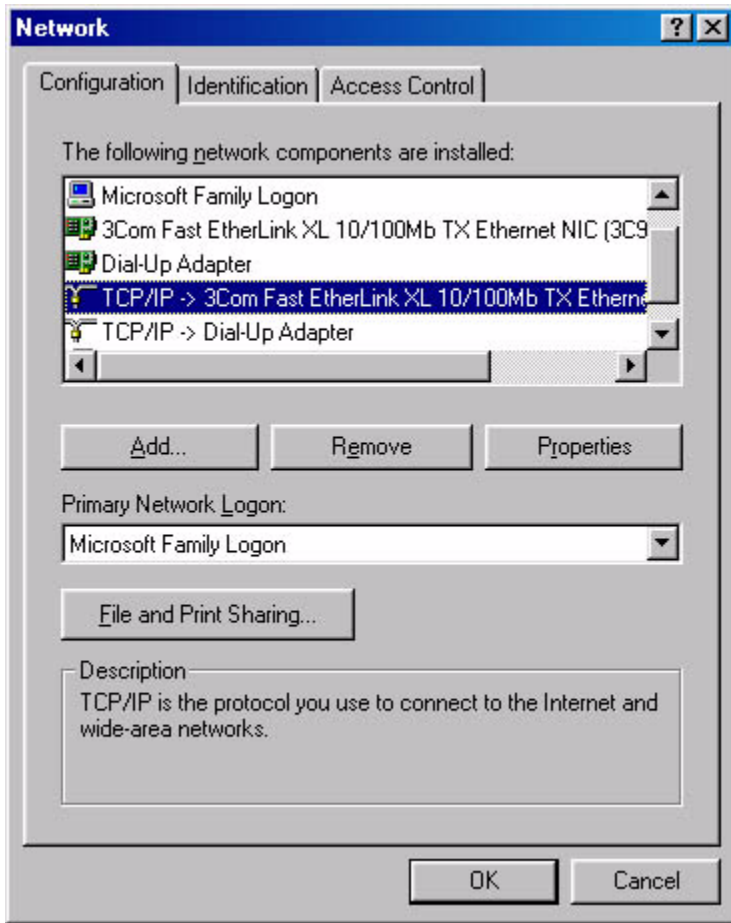
2) Double-click the Network icon.



F-1-5

- 3) Check the [Configuration] tab, making sure that the name of the network interface card (here, [3com Fast EtherLink XL 10/100Mb TX Ethernet NIC(3C905B-TX)]) and TCP/IP are found.





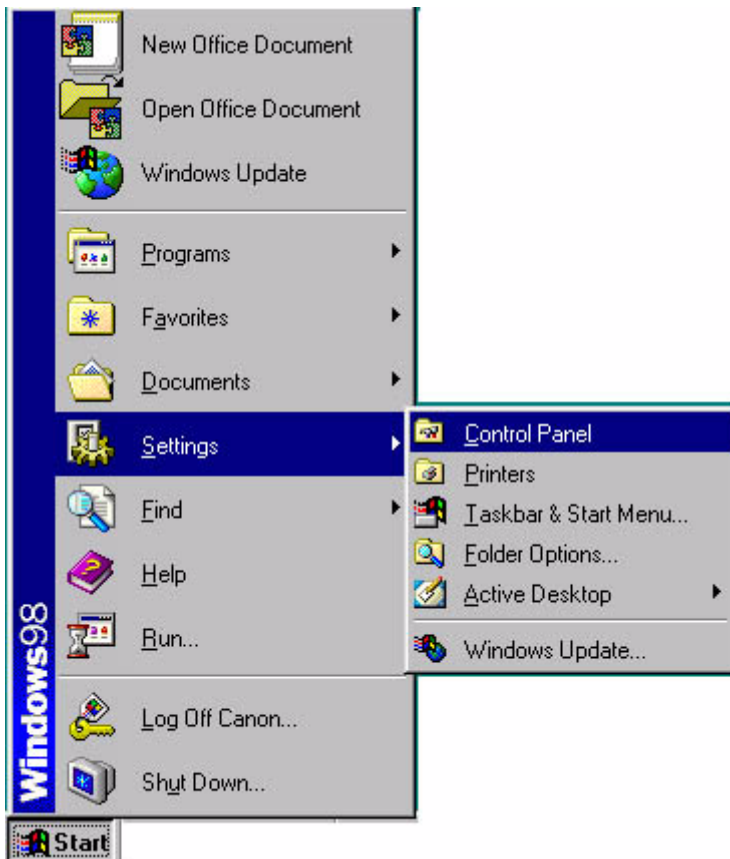
F-1-6

# 1.6 Making Settings Without Using Automatic Execution (CD-ROM)

0006-2917

- If you have failed to install printer drivers, go through the individual steps manually to identify the cause. At times, not using the automatic execution (occurring in response to the insertion of the CD-ROM) may prove to be a good means of finding out the cause; go through the following steps:

1) Make the following selections: Start>Settings>Control Panel.



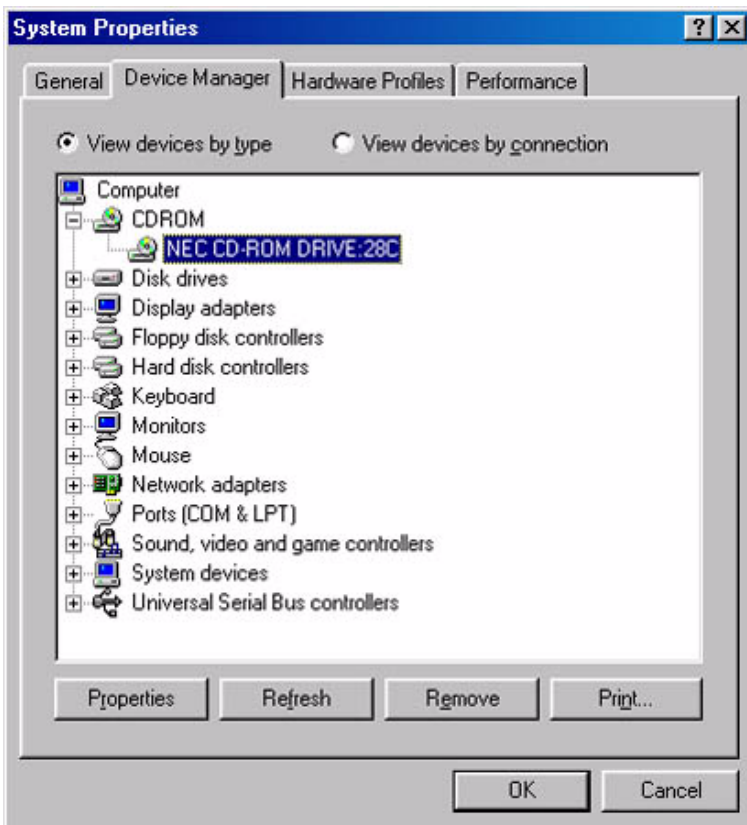
F-1-7

2) Double-click the System icon.



F-1-8

3) Make the following selections: Device Manager>CDROM>CD-ROM DRIVE.

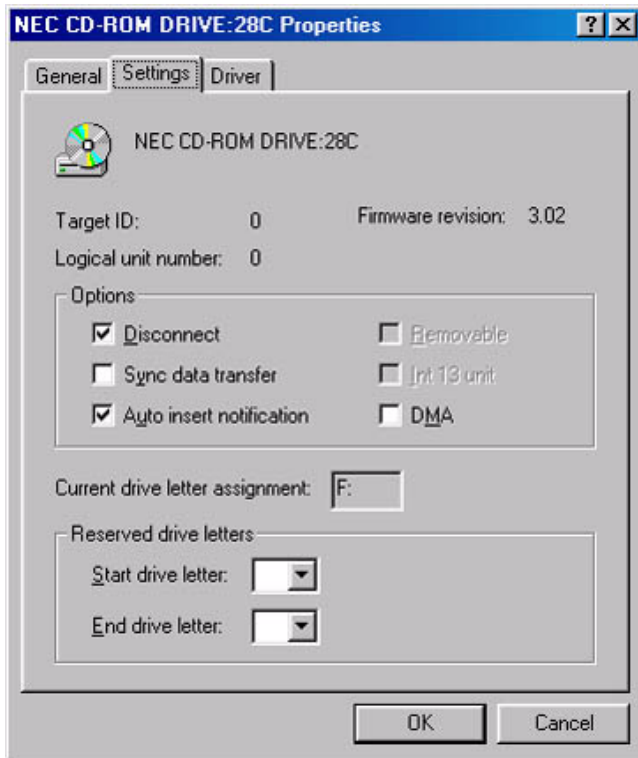


F-1-9

4) Open the [Settings] tab . Check to see if [Auto insert notification ] is selected or not.

- if not selected (without a check mark), auto execution will not occur.

- if selected (with a check mark), remove the check, and click [OK] and then [Close]. When asked if you want to restart, click [Yes] to restart the PC.



F-1-10

- The foregoing settings are valid only for automatic execution that would otherwise occur; regardless of these settings, double-clicking the CD-ROM icon (My Computer) will start up the menu program.

## 1.7 Canon LPR2

0006-2918

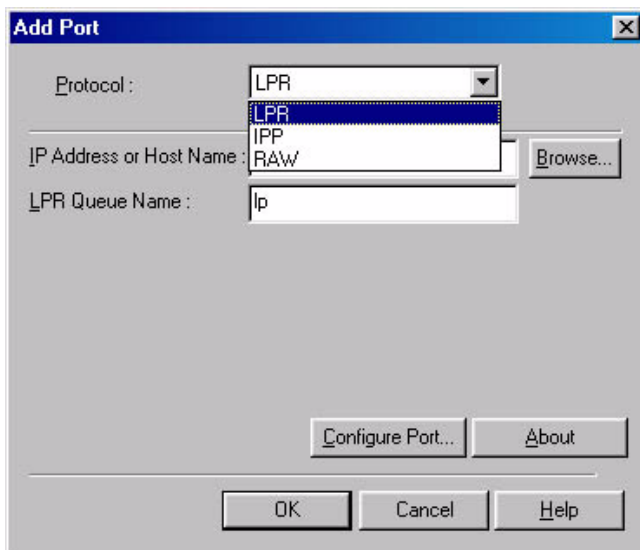
Canon LPR2 is software designed to enable printing on a printer connected to a network from Windows 95/98/Me/NT4.0/2000/XP, and it offers the following functions:

### Support of Multiple Ports

Any of the following protocols may be selected for Canon LPR2

- LPR
- RAW
- IPP

Protocol Selection Screen

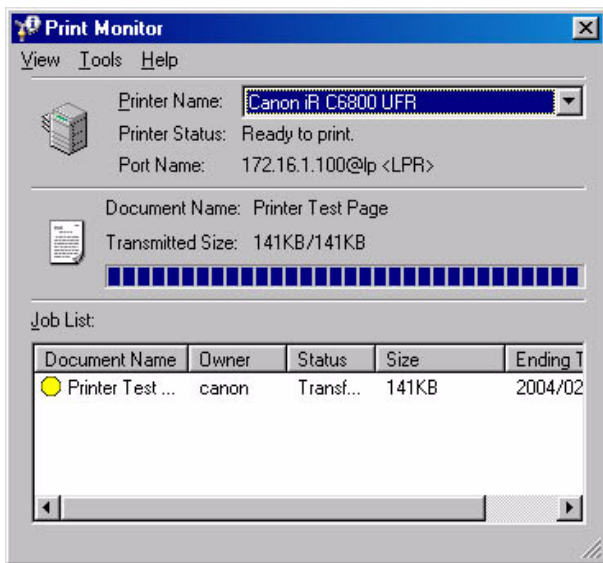


F-1-11

### PRINT MONITOR

The status of the printer connected by way of the port monitor and the status of jobs from clients are displayed on the monitor screen (PRINT MONITOR) in keeping with the instructions sent to the printer. The monitor screen program is part of the port monitor.

### Print Monitor Screen



F-1-12

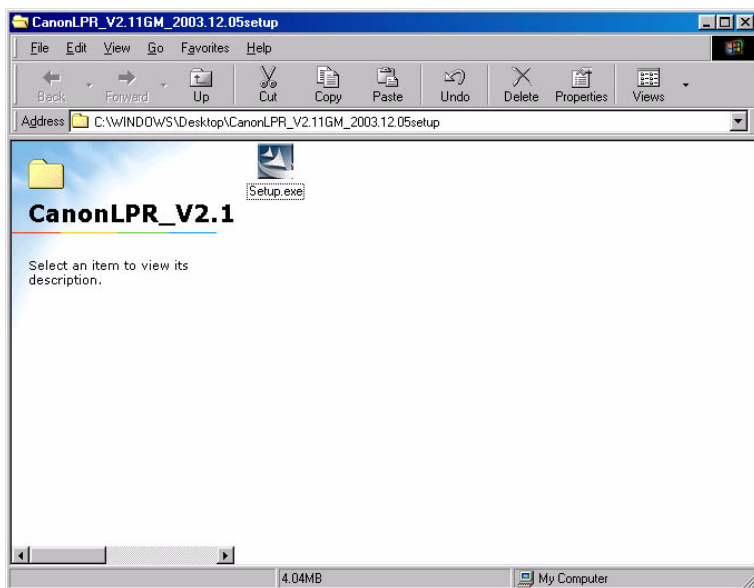
# 1.8 Installing Canon LPR2

0006-2919

1) When the CD-ROM (User Software CD-ROM) is set in the CD-ROM drive of the PC, the setup screen will appear unless auto execution is disabled:

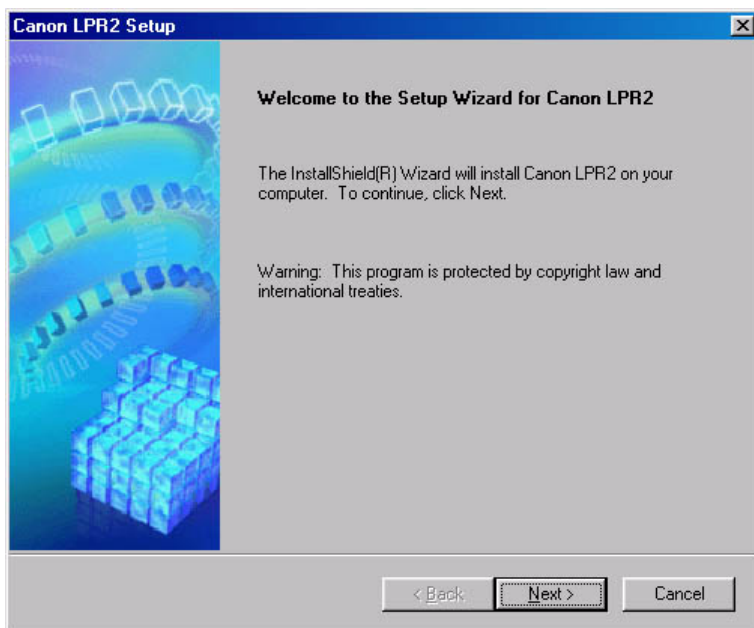
- If you want to close the screen, click the close button in the upper right corner of the Windows screen.

2) Double-click the CD-ROM drive. Double-click the Setup.exe icon in the LPR port folder.



F-1-13

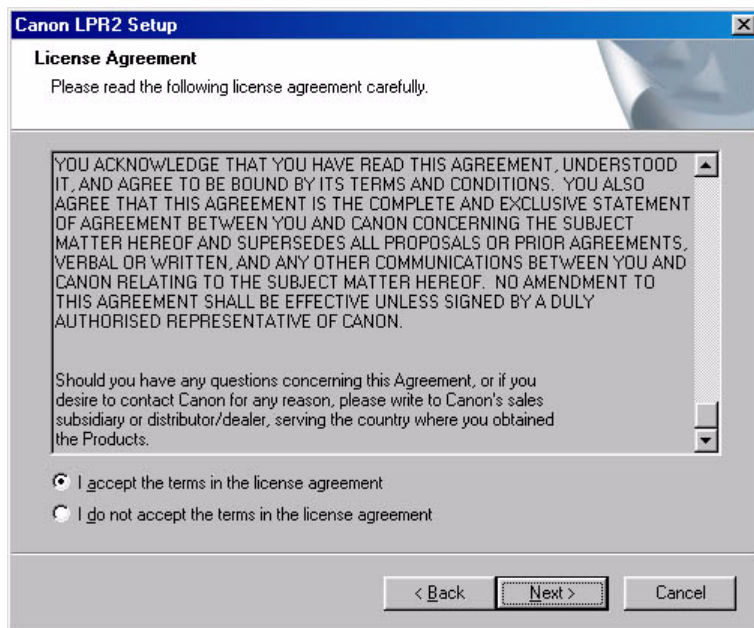
3) Click [Next].



F-1-14



4) Select [I accept the terms in the license agreement], and click [Next].

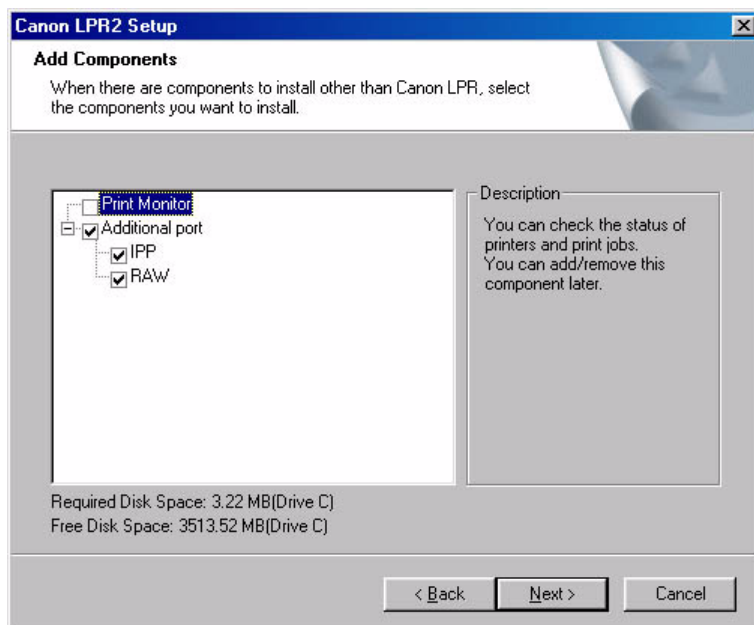


F-1-15

5) Click [Next].

Note:

If you are not installing 'printer monitor', check to see that the notation is not checked (selected); then, click [Next] to go to step 6).

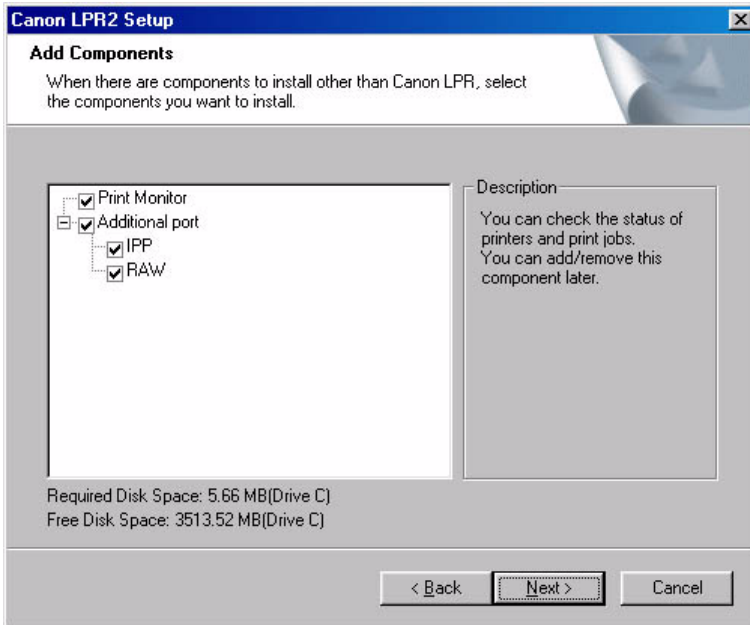


F-1-16

Note:

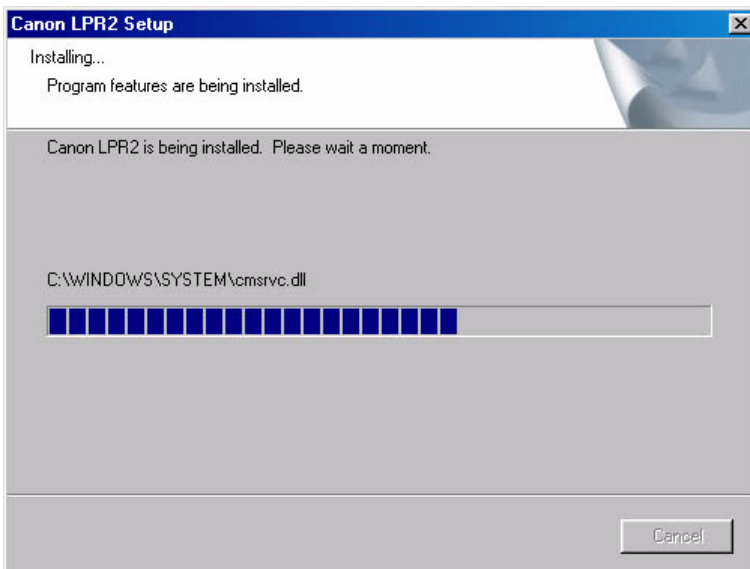
If you want to install 'Print Monitor' , on other hand, go through steps 1 through 4.

1. Select 'Print Monitor'(by adding a check mark), and click [Next].



F-1-17

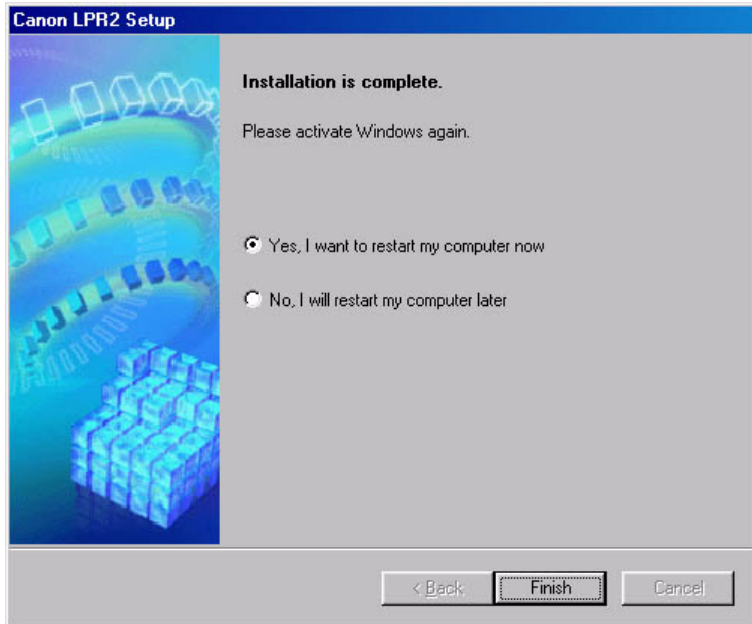
2. See that installation starts and files are copied. (Once it has started, you cannot "Cancel" the operation.)



F-1-18

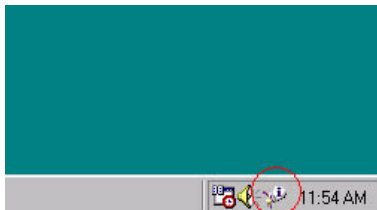
3. Click [Finish]

- If any other application is running, select [Yes, I want to restart my computer now], and click [Finish]. Restart the PC manually after ending the application.
- If no other application is running, select [No, I will restart my computer later], and click [Finish]. The PC will restart.



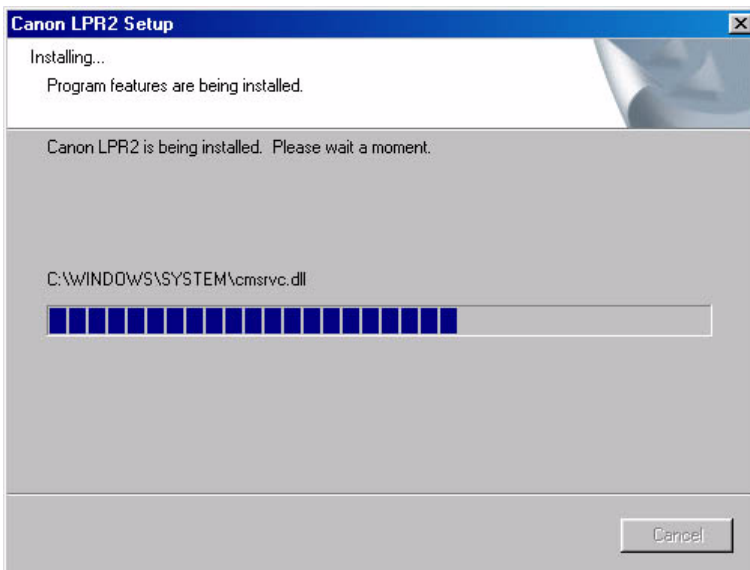
F-1-19

4. See the new icon in the task bar (lower right of the screen) of the PC. (You can right-click the icon to bring up or close the Monitor screen as needed.)



F-1-20

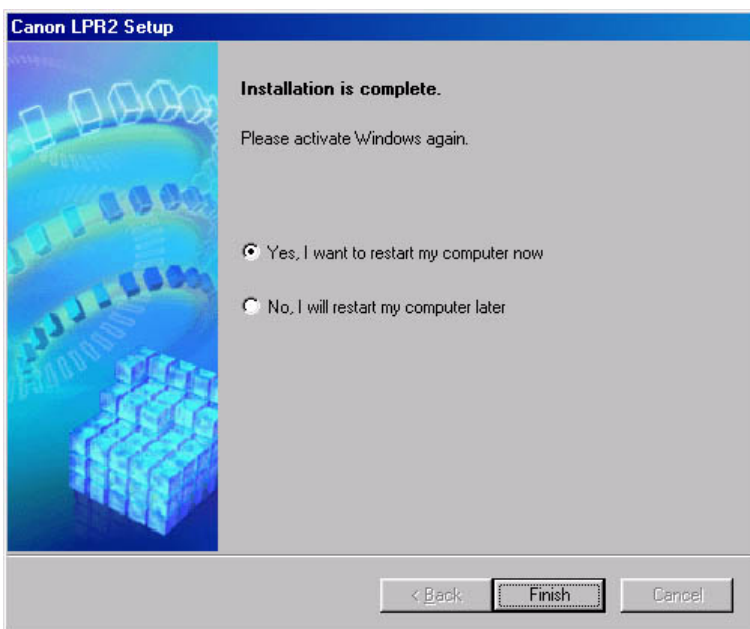
- 6) See that the fields are copied. (Once it starts, you cannot "Cancel" the installation until all files have been copied.)



F-1-21

7) Click [Finish].

- If any other application is running, select [Yes, I want to restart my computer now], and click [Finish]. Reset the PC manually later after ending the application.
- If no other application is running, select [No, I will restart my computer later], and click [Finish]. The PC will restart.



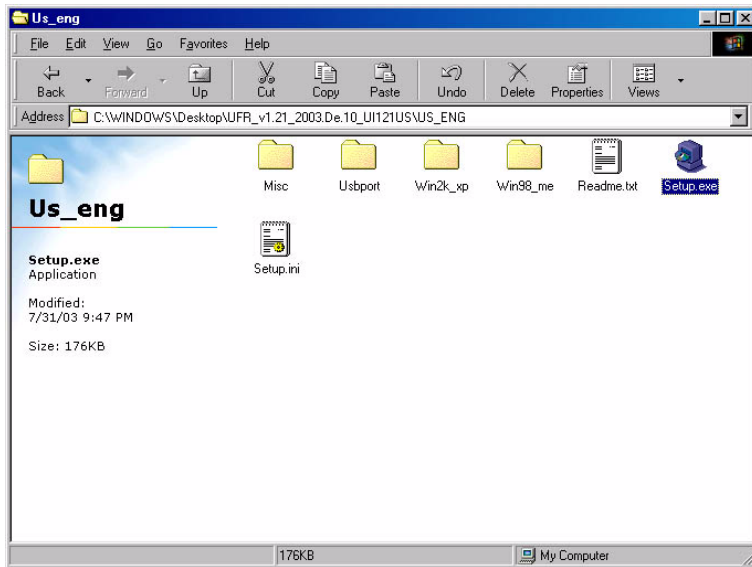
F-1-22

## 1.9 Installing Printer Drivers (LPR connection)

0006-2920

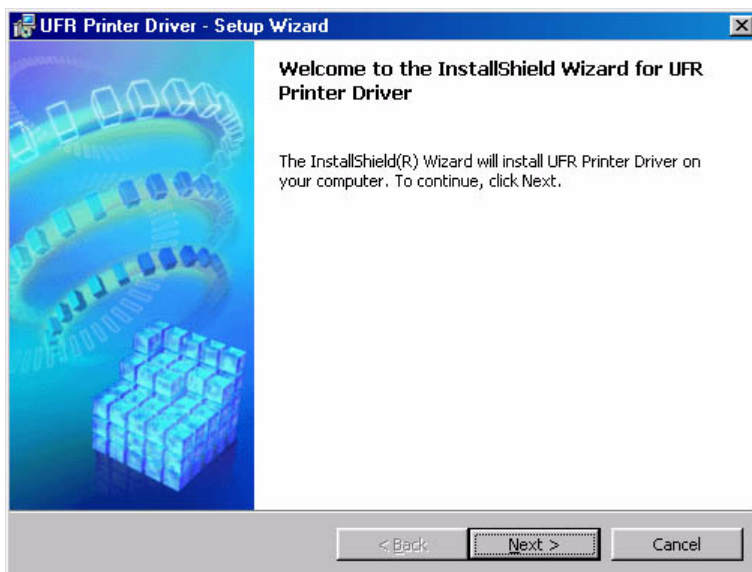
1) Inset the CD-ROM (User Software CD-ROM) in the drive of the PC. The setup screen will appear automatically. Click [Install Printer Drivers] on the scan.

- If the UFR CD-ROM Setup screen does not automatically appear after inserting the User Software CD-ROM in the drive, find the Setup executable, labeled [Setup] or [Setup.exe], and double-click the executable, from the CD-ROM.



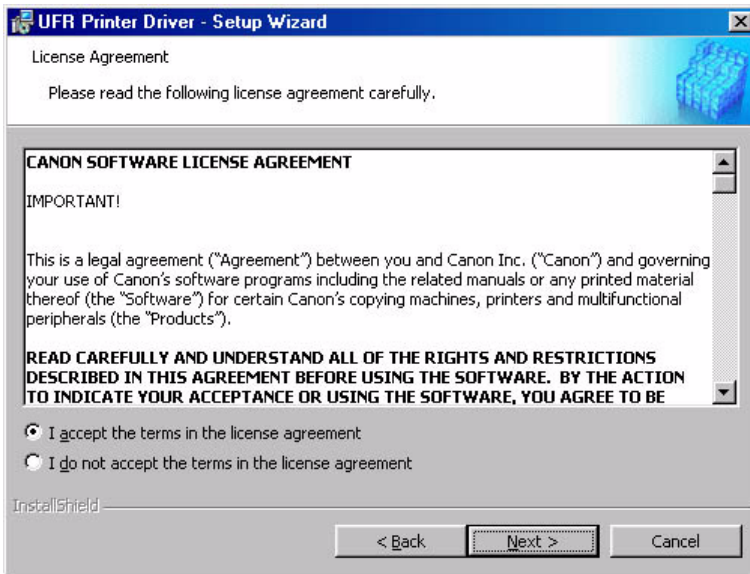
F-1-23

2) Click [Next].



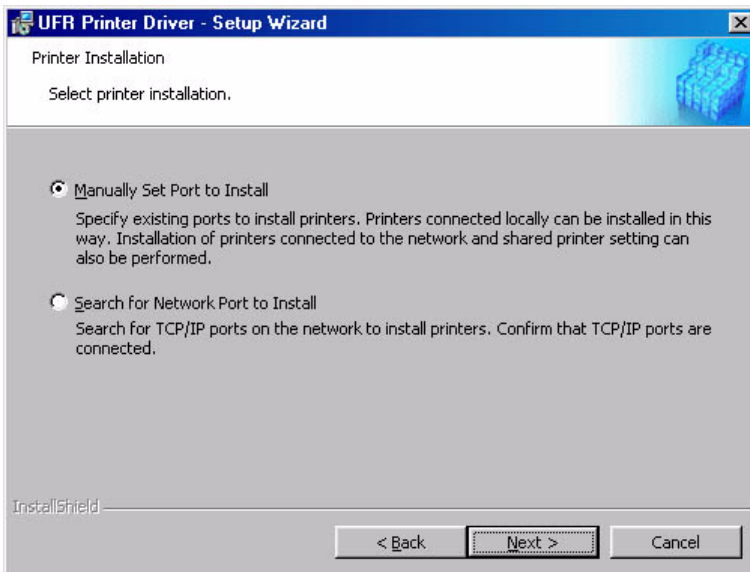
F-1-24

3) Select [I accept the terms in the license agreement ], and click [Next].



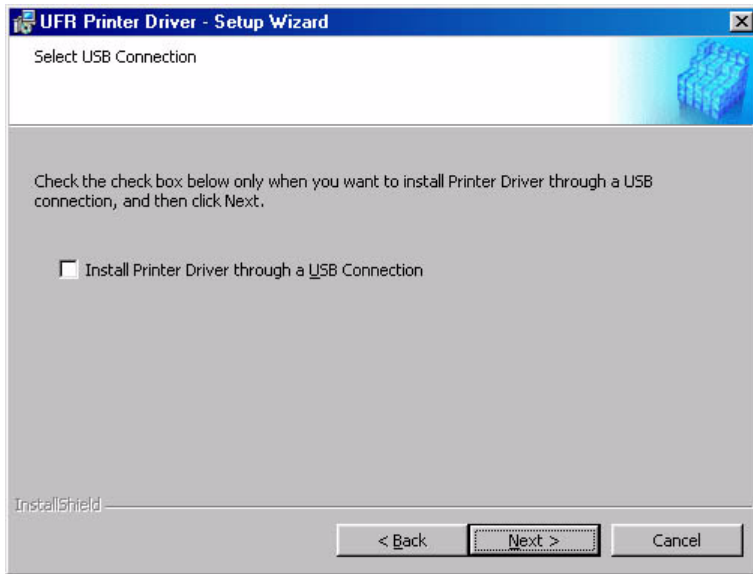
F-1-25

4) Select [Manually Set Port to Install], and click [Next].



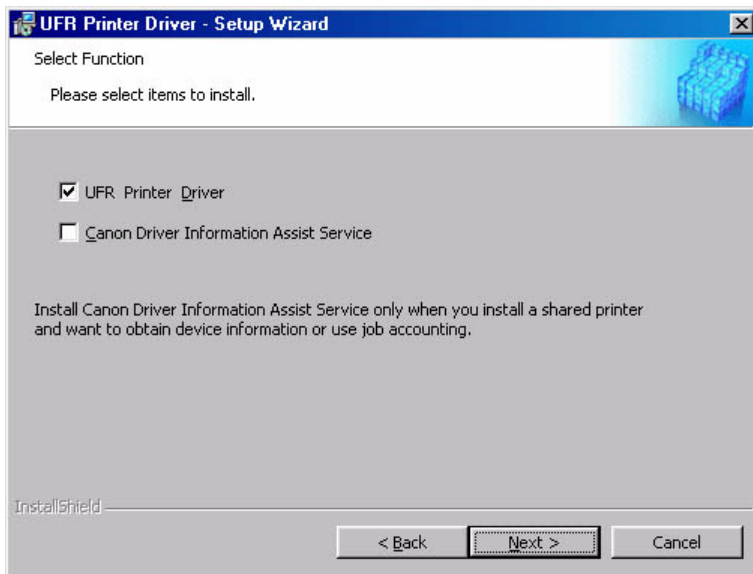
F-1-26

5) Check to see that the radio button is not checked (selected), and click [Next].



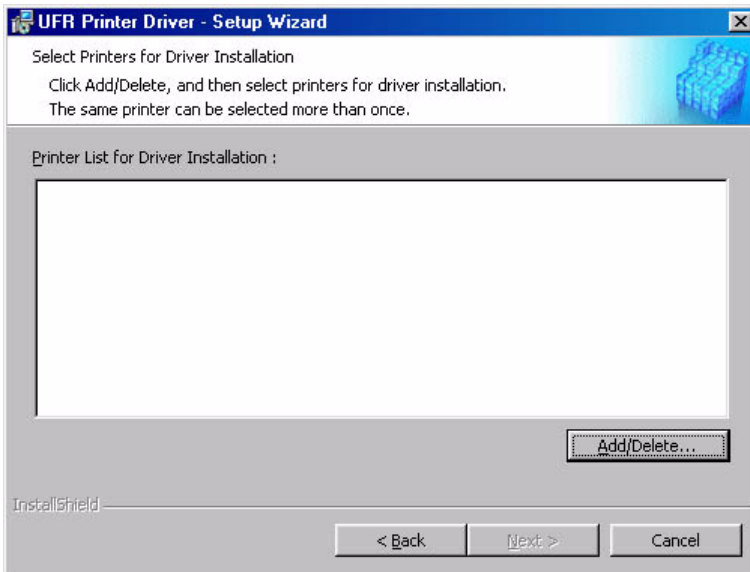
F-1-27

6) Check to see that [UFR Printer Driver] is checked (selected), and click [Next].



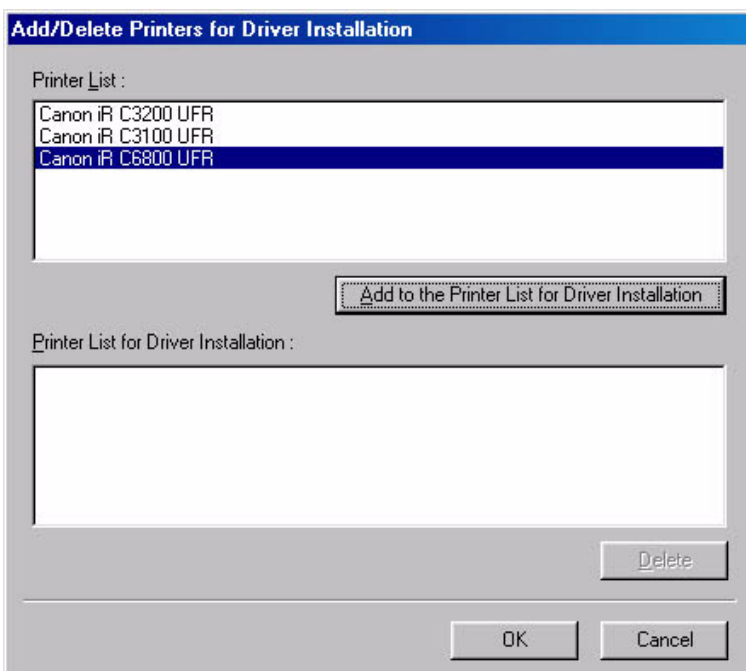
F-1-28

7) Click [Add /Delete].



F-1-29

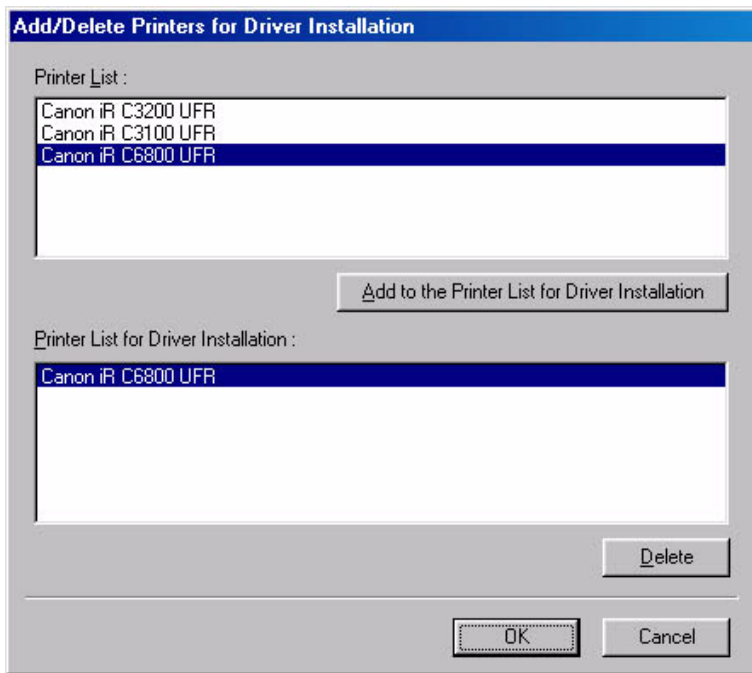
8) For [Printer List], select [Canon iR C6800 UFR], and click [Add to the Printer List for Driver Installation].



F-1-30

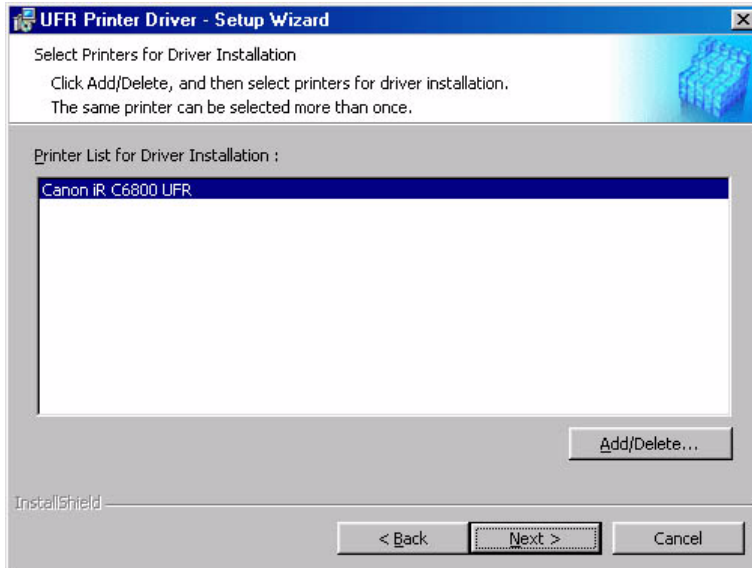
9) See that the printer you have selected (Canon iR C6800 UFR) has been added to the list of printers to install; then, click [OK].





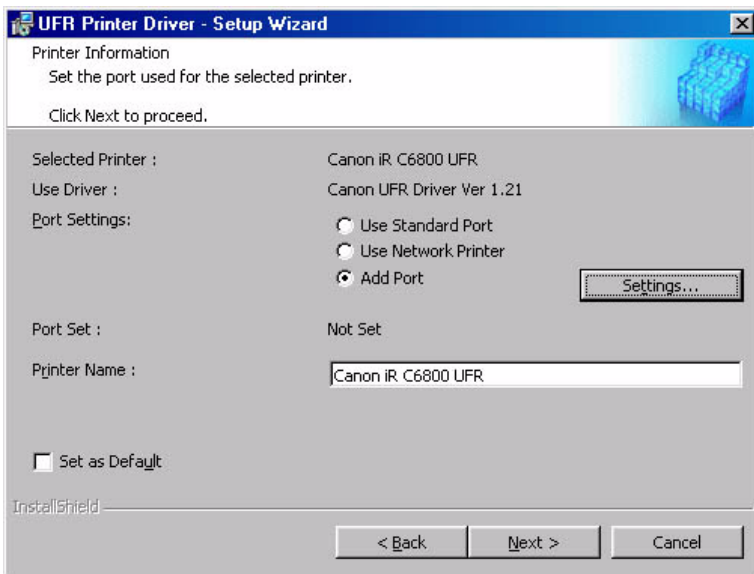
F-1-31

10) See that the printer you have selected (Canon iR C6800 UFR) is indicated in the list of printers to install; then, click [Next].



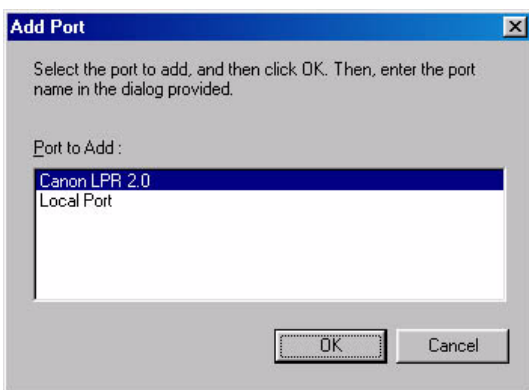
F-1-32

11) Select [Add Port], and click [Settings].



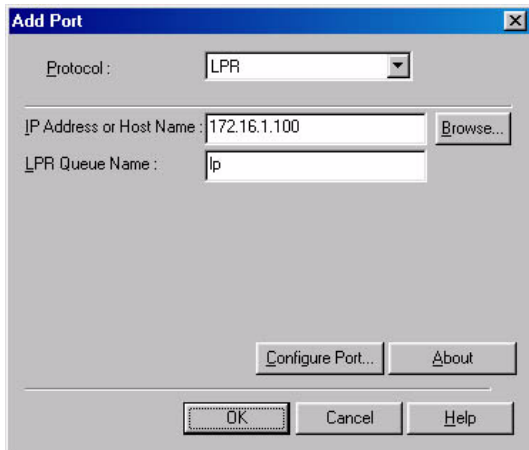
F-1-33

12) Select [Canon LPR 2.0], and click [OK].



F-1-34

13) Check to see that 'LPR' is indicated under [Protocol]. For [LPR Queue Name], 'lp' is automatically entered. Enter the setting you have made for the iR C6800 (or the information you have collected) for [IP Address or Host Name]; then, click [OK] to go to step 14).

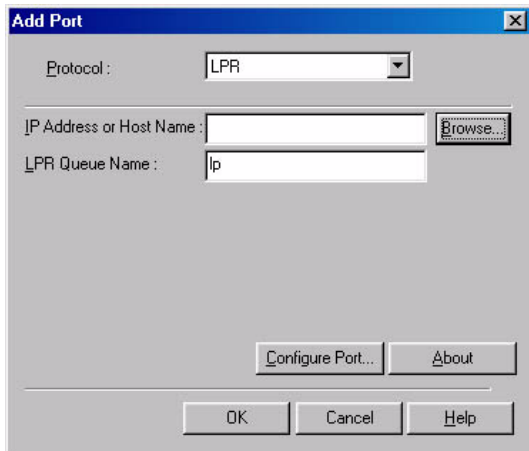


F-1-35

Note:

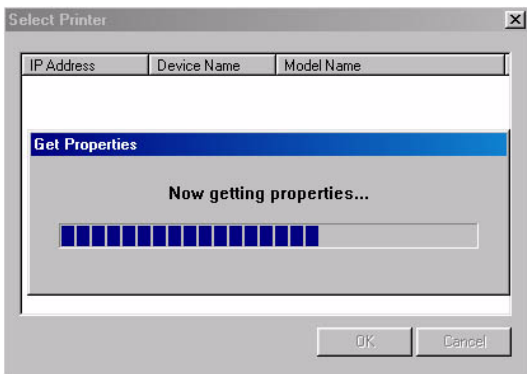
At this time, you need not directly type in [IP Address]; click [Browse] so that the appropriate information will automatically be collected from the device, including the IP address.

1. Check [Protocol]; then, click [Browse].



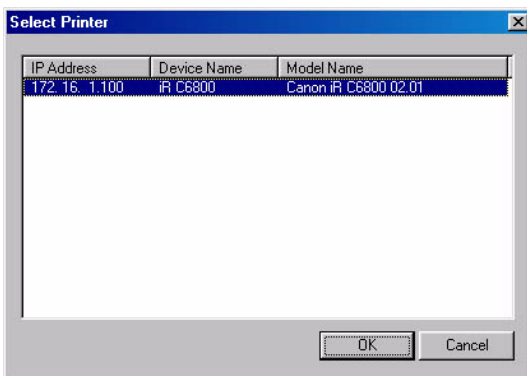
F-1-36

2. See that a screen appears indicating that information is being collected from the device.



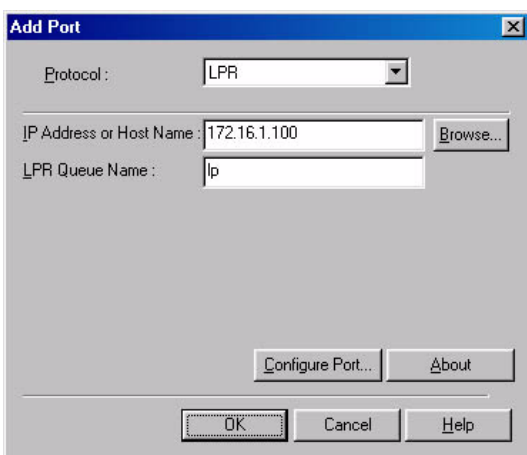
F-1-37

3. See that the information on the device (including IP Address, Device Name, Model Name) that has been collected is indicated. Click [OK].



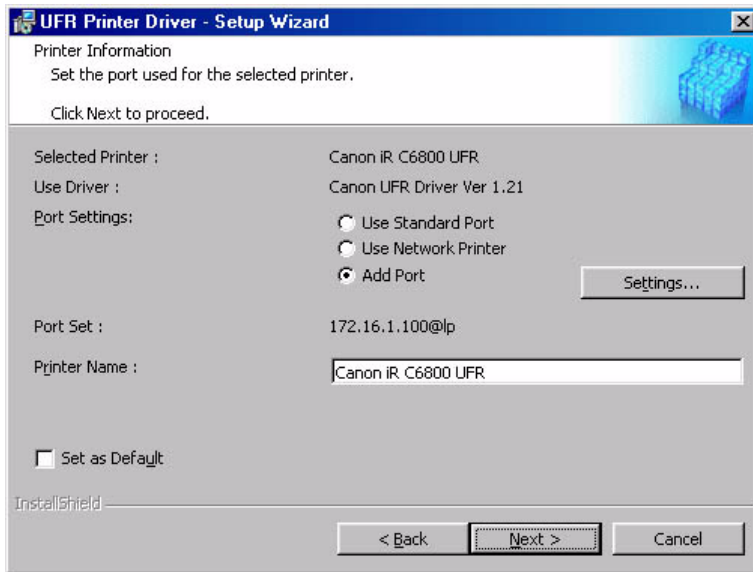
F-1-38

4. See that the IP Address or Host Name are indicated; then, click [OK] to go to step.



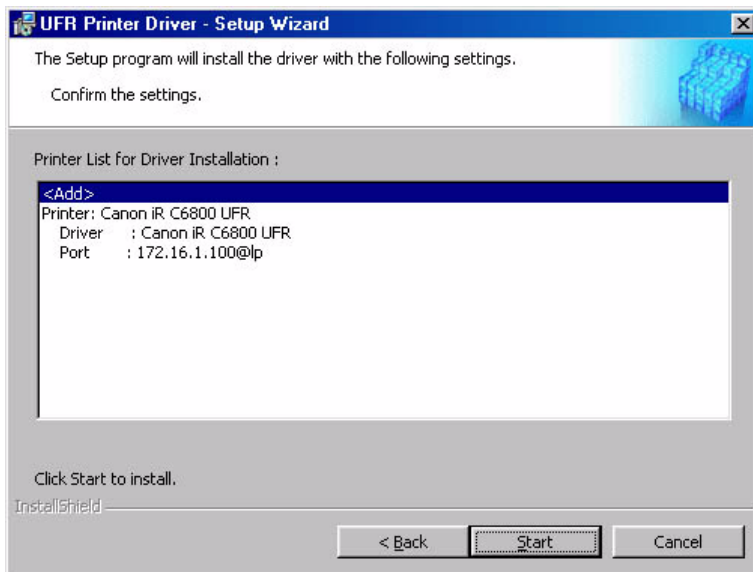
F-1-39

14) Check to see that the port has been changed to the port you have added; then, click [Next].



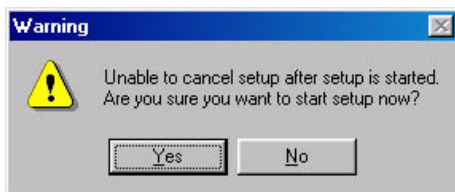
F-1-40

15) Check the settings; then, click [Start].



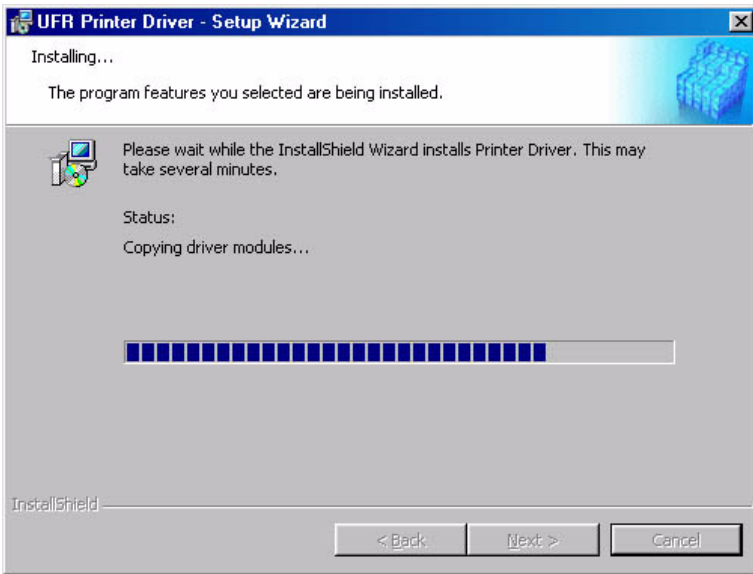
F-1-41

16) Click [Yes]; other wise, the installation will not start.



F-1-42

17) See the screen that has appeared in response to clicking [Yes] in step 16), i.e., after the start of installation.



F-1-43

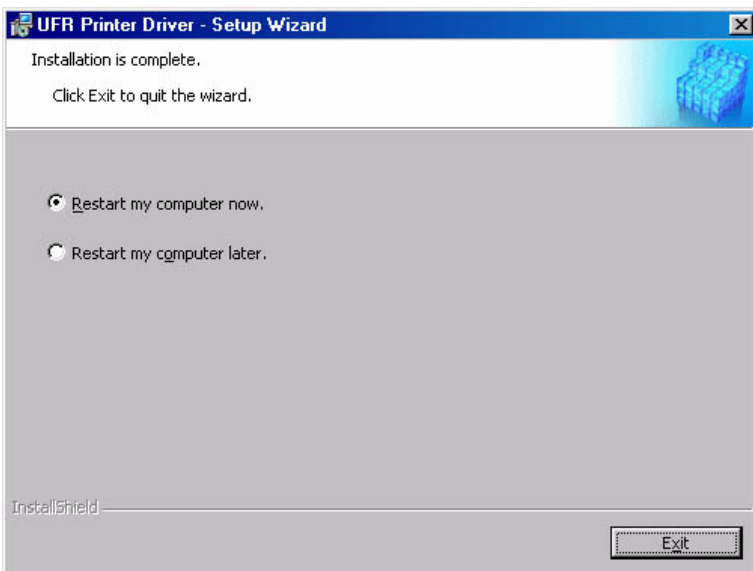
18) See the following screen:

**<if any other application is running>**

- select [Restart my computer now], and click [Exit]. Restart the PC manually later after ending the application.

**<if no other application is running>**

- select [Restart my computer later], and click [Exit]. The PC will restart.



F-1-44

### **Opening Printer Properties**

- Start>Settings>Printers>(right-click the printer you want to open)>Properties

### **Printing from the PC**

- Start>Settings>Printers>(right-click the printer you want to open)>Properties>Test Print

### **Selecting the Printer of First Choice**

- Start>Settings>Printers>(right-click the printer you want to open)>(check to see if the printer you want is selected)

Note:

If the printer is selected (identified by a check mark), leave it as it is.

Otherwise, select the printer so that it is identified by a check mark. Some applications, however, select the most recently used printer (e.g., Internet Explorer).

### **Bring Up the Help Guide**

- Use the Help guide when you need detailed information about printer drivers.

Click the ? symbol in the upper right corner of the Windows screen; then, click to select the item for which you need information.





Mar 18 2004

